

SHelf

CREATIONS WOODSHOPCLASS

WWW.YOUNGFOUNDATIONS.ORG/CREATIONS



WHAT'S IN YOUR PACKET?

Lesson for teacher use.....pages 2-3
Shelf Tutorial.....pages 4-6



CLASS NAME: **SHELF**

Start class with a word of prayer.

SCRIPTURE

How shall we escape, if we neglect so great salvation; which at the first began to be spoken by the Lord, and was confirmed unto us by them that heard him;

HEBREWS 2:3

MORAL PARABLE: Be a witness for Christ.

QUOTE

“Now, Paul was saying that to his Hebrew audience. Now, they didn’t have tape recorders, today, like we got here. But they had scribes who was setting there, taking It down just as Paul was preaching It.

And that’s what It is right here. We’re getting It by tape recorders, and these tapes go over the world, see, to show that It is the Truth. Our religion is not in vain, It’s absolutely the resurrected Jesus Christ, same thing. Now we mustn’t neglect It.

Now, just don’t go away from church, today, and say, “Well, I kind of enjoy going down there. I like the singing, and the people are friendly around that little old church.” Don’t do that.

Brother, let your heart become a flame, say, “Here, I got to do something about this. I got to get out and see if I can get somebody saved.”

And don’t go out, saying, “Bless God, if you don’t repent, you’re going to perish.” No.

Go at it gentle. “Be as wise as a serpent, as harmless as a dove.” See, that’s the way to go. Approach the person, if he’s raising chickens, talk about chickens, to him, for a while. See? And then, first thing you know, you’ll be talking about the Lord. If he’s a farmer, talk about his farm.

If he sells automobiles, talk about his automobiles, for a while, “What nice cars you got,” and so forth. See?

Till you catch the Spirit, when Father says, “Now is the time to approach him about his soul.”

You can wind it off, see, “That’s a fine automobile. You know transportation, today, has become great. Oh, how the nations has been brought close together; and the cities of our nations, close together. Friends and mothers can visit each other. You know, it’s a wonderful thing to have automobiles like you’re selling.”

“Yes, sir. It sure is. Uh-huh.” You know, puffing on his cigar, or whatever it is. “Yeah, them, them is good cars.”

“Did you ever think of what the old-timers would have thought if they’d seen something like that?” Just keep going like that, you know.

After a while, say, “Yep, yeah, sure is.”

You know, another thing it does, it brings like we having, like in revivals. People can come across the country, quickly, for a revival.” See, you’re opening the way, all time, you know.

If you feel something chock up the way, stop right there, move over here. Like a doctor said, out at Phoenix, said, “Lord, fill my mouth with good words, and then nudge me when I’ve said enough.” You see? Yeah. “Nudge me when I’ve said enough.”

**Rev. William Marrion Branham
57-0901M Hebrews, Chapter Three**

QUOTE MINUTE MARKER: 42:29-44:37, PARAGRAPH 105-115



SHelf TUTORIAL

MATERIALS NEEDED:

assorted wood
wood glue
finish (ex: mineral oil)
mounting hardware

TOOLS NEEDED:

safety glasses
measuring tape
pencil
sand paper
pin nail gun
router
bandsaw or jigsaw

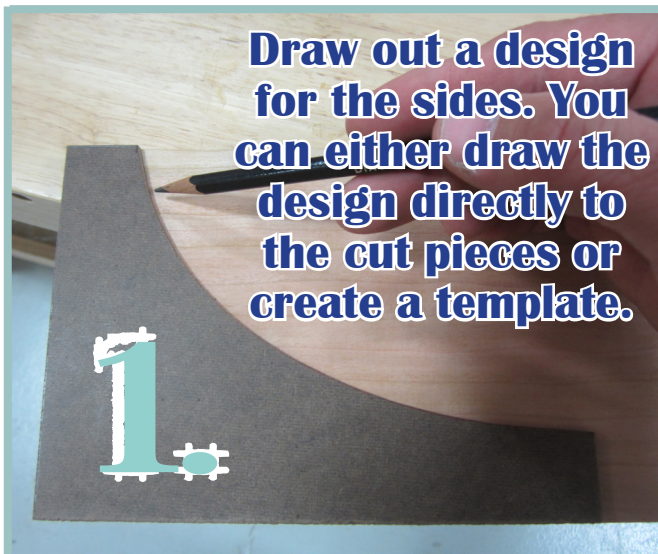
CUT LIST:

Top: 1 piece 7" wide x 30" long x 7/8" thick

Back: 1 piece 5" wide x 24" long x 7/8" thick

Sides: 2 pieces 5" wide x 7" long x 7/8" thick

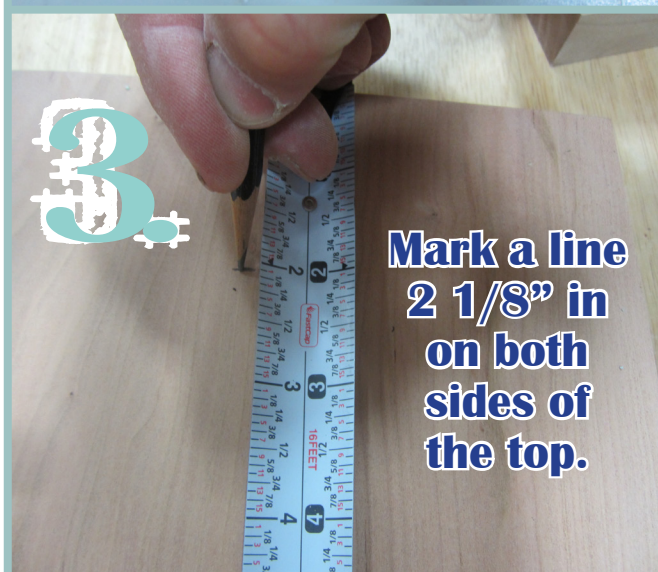
*Parental assistance recommended.



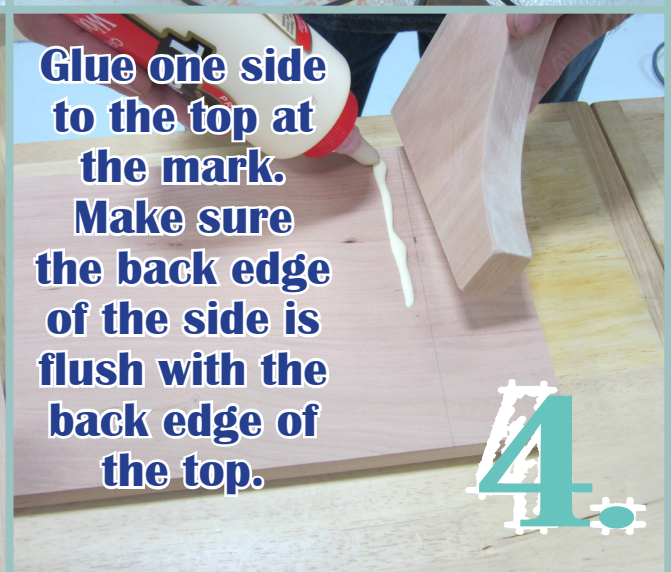
Draw out a design for the sides. You can either draw the design directly to the cut pieces or create a template.



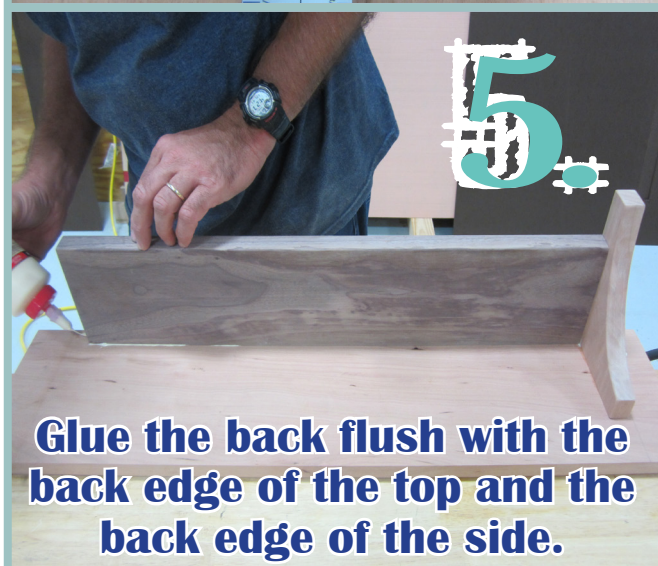
Use either a bandsaw or a jigsaw to cut out your design. You can cut both sides at the same time using a bandsaw.



Mark a line $2 \frac{1}{8}$ " in on both sides of the top.



Glue one side to the top at the mark. Make sure the back edge of the side is flush with the back edge of the top.



Glue the back flush with the back edge of the top and the back edge of the side.



Glue the other side along the other mark. Make sure it is flush with the back edge of the top and back.



Pin nail everything together to reinforce.



Create hooks or decorations for the inside of the shelf. Glue and pin nail.



Wipe off any excess glue and sand the entire shelf.



Apply finish.

Mounting: Drill and countersink two holes centered 8" in on both sides of the back of the shelf. Attach shelf to wall using 3" screws and cover screw head with matching wooden dowel or plug.

NOTE: If screwing into drywall, make sure holes are aligned with studs in wall. If not, appropriate drywall anchors will be necessary.

YOU'RE FINISHED!

