

Robe

creations sewing class



estimated
class time:
6 hrs

What's in your packet

Lesson pages for teacher use.....	pages 2-3
Robe Tutorial.....	pages 4-5
Handouts for student use.....	pages 6-7



CLASS NAME:

Robe

LESSON: Part 1

Scripture:

The woman shall not wear that which pertaineth unto a man, neither shall a man put on a woman's garment: for all that do so are abomination unto the LORD thy God.

Deuteronomy 22:5

Quote:

"You shouldn't be parading around before people with them on; I-I know that. So that way it would be, but in the-in going to bed I-I-I don't know. I'm going to have to back up on that one too. I told you I'd be honest if I didn't know.

I'm not going to put my own thought about it (all right), unless you want my own thought. If you want that, I'll tell you. See? Now remember, it isn't...it-it...This-this could be

a million miles wrong. I THINK IT'D LOOK NICE TO HAVE A nightgown ON. But-but if you-but if you...But that's just up to you."

Brother Branham

64-0830M

CLASS NAME:

Robe

LESSON: Part 2

SCRIPTURE:

For there is no respect of persons with God.
Romans 2:11

QUOTE:

"What was it? God, for the faith of that woman that maybe didn't know her ABC's, yes, she knowed her ABC's, "Always Believe Christ," see, for that woman, poor, illiterate woman, hardly knowed where the next meal was coming from, but her sincerity to the God that she loved, could ground that plane, and hold that plane until the prayer of faith was prayed over her boy, and could take a man and move him so I couldn't go at the plane, the Spirit of God turning me around. No matter how you try to go, It turns you back. You get God in you, brother, you can't walk that other road, Something turns you around. And held that plane there for that, That is the same God that is in this building tonight. You believe it? Put on the full armor of God. You believe Him?"

Brother Branham
62-0607

Robe Tutorial

Materials Needed:

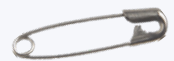
****Use McCall's pattern M6659 for steps and directions to make the robe.****

Make sure you allow for the extra fabric yardage if you lengthen or adjust any of the pattern pieces.
Use pattern pieces 1,2,3,4,5

Find the sizing chart on the pattern. There, you'll find how much yardage you need.
The pattern will also include the yardage amount for 45" or 60" fabric widths.

Lightweight cotton
or flannel fabric

Safety Pin



Seam Gauge

Fabric Pencil

Pins



Thread



Fabric Scissors



Tape Measure

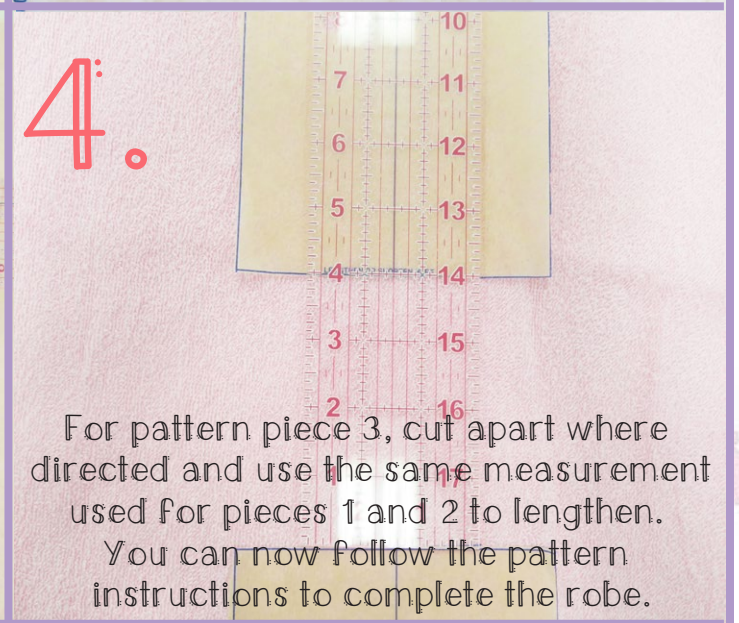
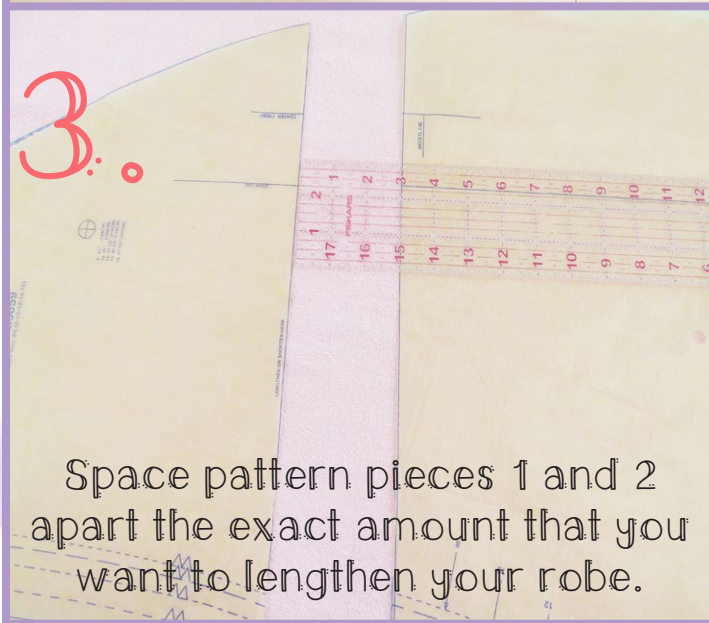
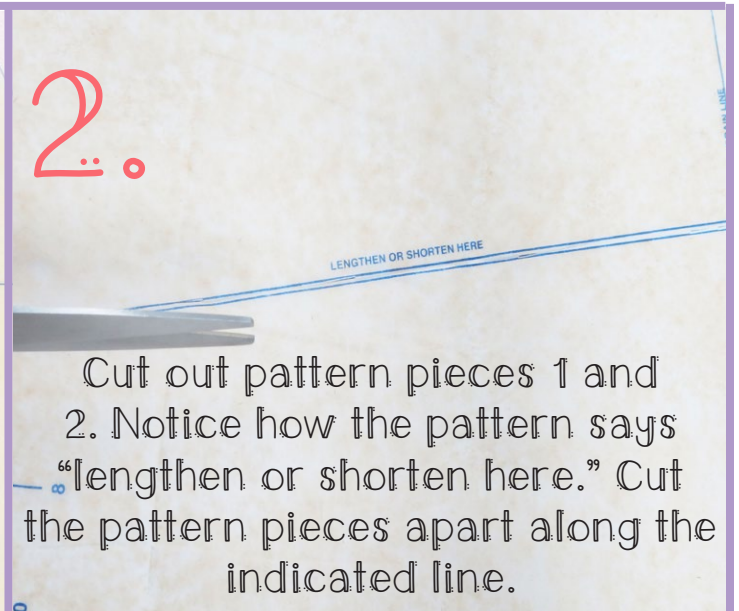
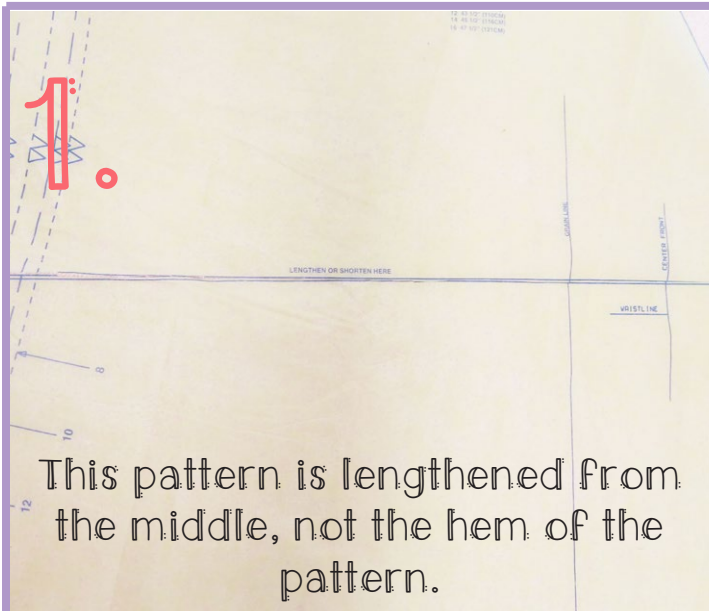


Seam Ripper

sewing instructions:

FOLLOW MCCALL'S PATTERN M6659 FOR STEPS AND DIRECTIONS TO MAKE THE ROBE.

BELOW ARE ADJUSTMENTS WE MADE TO THE PATTERN:



When fabric is cut out, double check the lengths of your pieces to be sure the lengths are all the same.

