

7 Angels Cloud

February 28, 1963 **RLD**



Supplies:

- 8" x 10" canvas
- 2 pieces of Cardstock
- Scissors
- 10 oz. Air-Dry Clay or 4 oz. White Air-Dry Foam Clay
- Paintbrush
- 1/2 oz. Mod Podge
- 1/2 oz. White Paint
- 1/4 oz. Pearl Paint
- 1" Wooden letters "Cloud", "7", and "Angels"
- 1/2" Wooden Blocks (4)
- Printables
- Cup of Water
- Clay Tools
- Hot Glue Gun
- Hot Glue Stick

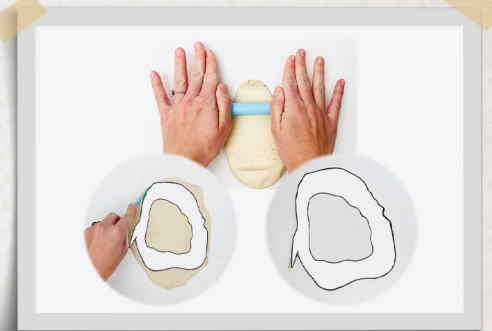
Tip: If using the white Air-Dry Foam Clay, you will not need paint.



Print all printables on cardstock and cut out.



Cut photo to fit your canvas and Mod Podge photo to canvas.



Roll clay out to about 1/4" thick. Use template as guide, and cut around Cloud with clay tool.

Style Option:

This option works best with the white foam clay. You can press the Angels into the Cloud instead of cutting them out and attaching to the Cloud.



Roll remaining clay and use Angels template to cut out 5 Angels wings, smaller Angel, and 7th Angel.



Attach the Angels to Cloud by pressing them into the Cloud.



Apply 2 coats of white paint to the Cloud; allow to dry.
Apply 1 coat of pearl paint.
(if using white air-dry foam clay, you won't need to paint.)



Allow clay to dry 3-5 hours.
(use a fan to help dry faster)



Paint 2 coats white on letters and number 7.
(if you cannot find a 7, use a wooden L turned backwards for the number 7.)



Hot glue wooden cubes to the back of the Cloud.



Place Cloud, wooden letters, and supernatural cutout on canvas to make sure spacing is correct.



Hot glue Cloud and letters to canvas.



Mod Podge supernatural cutout to canvas.

Cutout



Pressed



You're Finished!